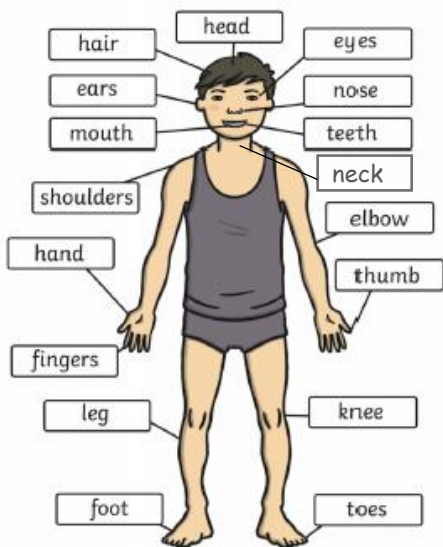


What should I already know?

- The names of some common animals.
- Some of your body parts

What will I know by the end of the unit?

Basic body parts



Your five senses



Sight – eyes



Smell – nose



Taste – tongue



Touch – skin
(hands, feet etc.)



Hearing – ears

Vertebrate Groups

Each group has its own structures and key features.



Mammal



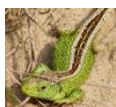
Fish



Bird



Amphibian



Reptile

Types of animal diets

Animals can be classified based on the type of diet they eat.



Herbivore



Carnivore



Omnivore

Vocabulary

amphibian	<ul style="list-style-type: none"> • cold-blooded • lay eggs • live on land and water • can breathe underwater through gills
backbone	the column of small linked bones down the middle of your back
bird	<ul style="list-style-type: none"> • warm-blooded • have wings and beaks • have feathers • lay eggs
carnivores	an animal that eats meat
cold-blooded	having blood whose temperature changes with the temperature of the air or water
fish	<ul style="list-style-type: none"> • have fins and scales • breathe underwater using gills • lay eggs in water • cold-blooded
gills	the organ through which fish and other water creatures breathe
herbivore	an animal that only eats plants
invertebrate	a creature that does not have a spine
mammal	<ul style="list-style-type: none"> • give birth to live young • usually have hair or fur • warm-blooded • cannot breathe underwater
omnivore	an animal that eats both meat and plants
pet	a tame animal kept in a household
reptile	<ul style="list-style-type: none"> • cold-blooded • lay eggs • have scales • cannot breathe underwater
temperature	a measure of how hot or cold something is
vertebrate	a creature which has a backbone
warm-blooded	a body temperature that does not change with the temperature of the environment
wild	animals that are not looked after by people

Data Handling

Ask own questions to group animals.
Present data in a simple table.

Lay eggs	Don't lay eggs

