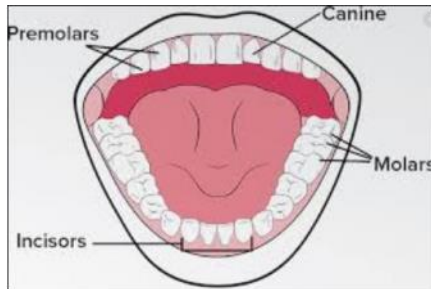


What should I already know?

- All animals need air, water and food to survive.
- The different ways in which humans can stay healthy.
- Animals get nutrition from what they eat.
- Humans and some animals have skeletons and muscles for support, protection and movement.
- What carnivores, herbivores and omnivores are.

What will I know by the end of the unit?

What are the names and functions of different types of human teeth?



- Canines are pointed for tearing and ripping food – used for chewing meat.
- Incisors are shovel shaped – used to bite lumps out of food.
- Premolars and molars are flat – used to grind and crush food.

The simple functions and parts of the digestive system

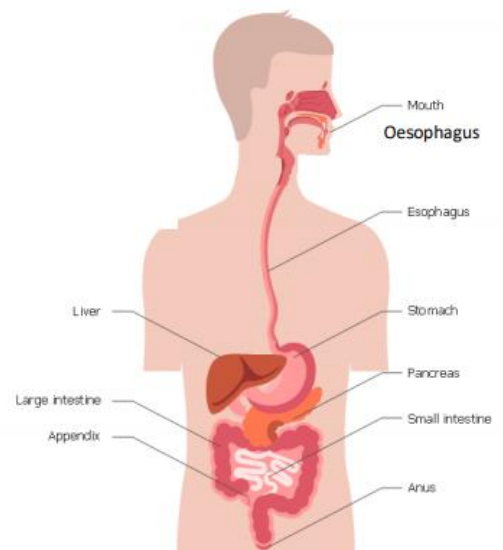
- The smell of food triggers saliva to be produced.
- The digestive system begins with the mouth where food is ingested and chewed.
- Saliva mixes with food, helping to break it up.
- Food is swallowed and passes through the oesophagus to the stomach.
- Food is mixed in the stomach.
- Mixed food is sent to the small intestine, which absorbs nutrients and food.
- Leftover food moves to the large intestine.
- The food arrives at the rectum where muscles turn it into faeces. It is stored here until it is excreted.

Vocabulary

absorb	soak up or take in
canine teeth	pointed teeth
carnivore	an animal that eats meat
digestion	breaking down ingested food
excretion	the process of removing faeces from the body
faeces	the solid waste removed from the body
herbivore	an animal that eats plants
incisor	teeth used for biting food
ingested	taking food into the body
intestines	tubes in the body that carry food
molar	large, flat teeth, used to chew
nutrition	absorbing the nutrients from food
oesophagus	part of the body that carries food from the throat to the stomach
omnivore	an animal that eats both plants and animals
organ	a part of your body that has a particular purpose
predator	an animal that hunts and eats other animals
premolar	flat teeth to crush food
prey	an animal that gets hunted for food
producer	a plant that produces its own food
saliva	the watery liquid in your mouth
stomach	where food is broken down

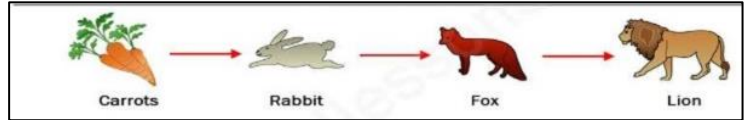
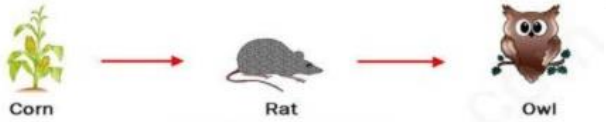
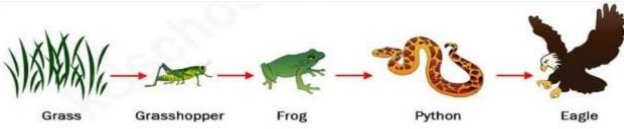
Data Handling

Investigate which type of organism is most common in a specific environment. Present the findings using an appropriate graphical method, out of a bar chart or a time graph.



What is a food chain?

- A food chain is a series of organisms, each dependent on the next as a source of food.
- It shows the links between animals and the food that they eat.
- Each food chain starts with a **producer**, which is a plant that produces its own food.
- Each arrow points from a food source, to the animal that consumes it.
- A **consumer** is an animal that eats a plant or another animal.
- A **predator** is an animal that hunts for food.
- An animal that is hunted for food is **prey**.



producer	consumer	consumer	consumer
	prey	prey	predator
		predator	